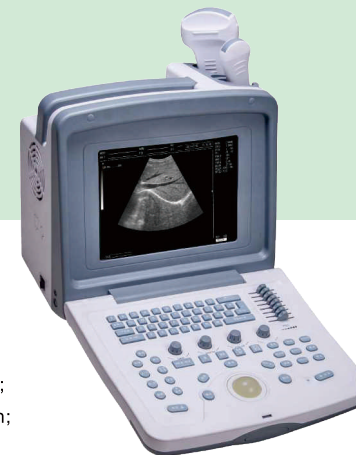




**BU-907** B-Ultrasonic  
Diagnostic Equipment

# BU-907 B-Ultrasonic Diagnostic Equipment



## Specifications:

Model	BU-907	
Probe	60R/3.5MHzconvex array	
Maximal Detect Depth	≥250mm	
Resolution (mm)	Lateral	≤3(depth≤80) ≤4(80 < depth≤130)
	Axial	≤2(depth≤80) ≤3(80 < depth≤130)
Blind Zone (mm)	≤5	
Geometric Position Precision(%)	Horizontal	≤15
	Vertical	≤10
Monitor Size	9.7- inch	
Display Mode	B, B+B, B+M, B+2M, M, 4B	
Image Gray Scale	256 levels	
Cine Loop	≥400 frames(Max)	
Image Storage	64 frames (Max)	
Acoustic Power	80% and 100% adjustable	
Dynamic Range	0 ~ 192dB	
8 Segments TGC	Yes	
Measurement	Distance, circumference, area, volume, heart rate. GA, FW, EDD, LV/VF, AV, MV, PV, TV, BDP, FL, CRL, AD, GS, LMP	
Output Report	4 types	
Port	USB 2.0, PAL-D video, RS-232	
Power Consumption (MAX)	90 VA	

## Features:

- Full digital beam-forming technology;
- 9.7-inch LCD screen, portable design;
- 8-segment TGC adjustment;
- Silicon-gel keyboard with backlight;
- Two transducer connectors;
- Multi-frequency transducers for wide application;
- External interfaces of USB, RS232, Video and grounding;
- Display the biopsy guide line;
- Diagnostic report generated automatically;
- 2 times local zoom both in real-time and frozen;
- Measurement and calculation software packages for Abdomen, OB/GYN, Urology, Cardiology, Small Parts etc.



Optional Trolley and Nog

Dual Probes Sockets

USB Port



3.5MHz Convex Array Probe



7.5MHz HF Linear Probe



7.5MHz Endo-rectal Probe



5.0MHz Micro Convex Probe



6.5MHz Endo-vaginal Probe



Optional Biopsy Guide Accessory